

**The Connecticut Society
Of Histotechnologists, Inc.**



A Sea of Opportunities



2010 Region I Histotechnology Conference and Symposium

April 23-24, 2010

Mystic Hilton

Mystic , Connecticut

JOIN US!

Message from the CSH President

The Connecticut Society for Histotechnologists, Inc. would like to welcome you to the 2010 Region I Histotechnologists Conference and Symposium. We have chosen a wonderful location in Mystic, Connecticut at the Mystic Hilton Hotel and Conference Center. The CSH meeting planning committee has worked very hard to put together an exciting and varied program. Speakers on research, clinical, management, safety, techniques, process improvement in histology and forensics are all part of our program this year. This meeting would not be possible without the support of all of our vendors so be sure to visit the vendors when you have some free time.

Mystic, Connecticut is located on Connecticut's easternmost coastline on Long Island Sound. It is a very scenic area with many attractions. Within walking distance of the hotel is the Mystic Aquarium and Institute for Exploration which houses 3500 specimens of fish, penguins and aquatic mammals such as seals, sea lions and beluga whales. We are privileged this year to have a speaker directly from the aquarium to present her work on beluga whale research. Within walking distance of the Mystic Hilton is Olde Mistick Village, home of 28 retail shops and there is also outlet shopping in the area. And don't forget, Mystic Pizza (famous from the movie of the same name) and many other excellent restaurants near the hotel.

Connecticut also has two very large casinos a very short drive from Mystic, Foxwoods Mashantucket Pequot Casino and the Mohegan Sun casino. Both casinos offer much more than gambling with a multitude of great restaurants and shops.

The world's largest maritime museum, Mystic Seaport, is nearby the Hilton and is a living history museum and scenic seaport reflecting Mystics seafaring history. Here, there are tall ships such as the Charles W. Morgan, a whaling ship undergoing restoration on site. There is a village on this site which recreates a 19th century fishing village.

Every year this meeting is a wonderful chance to learn something new, network with people in the histotechnology field, visit with the vendors and see the newest technology, take a break from work and enjoy a new place. With so many local attractions in Mystic and nearby, I would recommend allowing yourself an extra day or two to enjoy the area. Check out www.mystic.org or www.visitconnecticut.com/mystic for more information.

Nancy Troiano
President, CSH

2010 Region I Director: Angela Fogg
2010 Region I President: Mary Georger

2010 State Presidents

Connecticut	Nancy Troiano
Maine	Kathy Treat
Massachusetts	Linda Rogers
New York	Mary Georger
Rhode Island	Bruce Bouchard
Vermont/New Hampshire	Jeannette Mitchell

2010 Connecticut Officers

President	Nancy Troiano
Vice President	Denise Woodward
Treasurer	Leo Kelly
Secretary	Paula Mayo
Membership Chair	Cindy DeRiso
Webmaster/Editor	Amos Brooks

2010 Symposium Committee

Chairperson	Nancy Troiano
Vendor coordinator	Denise Woodward
Registration Director	Cindy DeRiso
Treasurer	Leo Kelly
CEU coordinator	Paula Mayo
AV/Webmaster	Amos Brooks

2010 REGION 1 CONFERENCE SPEAKERS

Nicholas Bellantoni, Ph.D
Associate Adjunct Professor
Connecticut State Archaeologist
University of Connecticut
Storrs, CT

Linda Walker Horbal
Consultant, Workforce Development &
Performance Solutions
MidState Medical Center
Meriden, CT

Carmen Jane Booth, DVM, Ph.D
Assistant Professor
Co-Director, Mouse Research Path.
Yale University
New Haven, CT

Tracy Romano, Ph.D
Senior VP of Research & Zool. Ops.
Mystic Aquarium & Inst for Exploration
Mystic, CT

Skip Brown, HT(ASCP)
Clinical Applications and Training
Leica Biosystems, LLC
St. Louis, MO

Susan Ryan, MS
Senior Scientist & Histology Manager
Genzyme Corp
Framingham, MA

Jason Burrill, HT(ASCP), SLS,
NRCC, CHO Manager
Global Environmental H & S
Charles River
Wilmington, MA

Harry Sanchez, MD
Associate Chief of Pathology
Hospital of Central Connecticut
New Britain, CT

Richard Cartun, M.S. Ph.D
Director of Histology and Immunology
Hartford Hospital
Hartford, CT

James Taylor
B/R Instruments
Easton, MD

Zoe Ann Durkin, M.Ed., HT(ASCP)
Associate Professor
Goodwin College
East Hartford, CT

Michael Tortora, CHMM, CHSP
Environ. Health and Safety Officer
CT Children's Medical Center
Hartford, CT

Salvatore Frasca, PhD
Assoc. Prof. Pathobiology & Vet Science
University of Connecticut
Storrs, CT

Andrea Viray, M.S.
Department of Pathology
Yale University
New Haven, CT

Virgil Hernandez
BioImage
Londonderry, NH

Glenda Hood, M.Ed., HTL(ASCP)
HT Program Director
Department of Clinical Lab Sciences,
Tarleton State University, Fort Worth, Texas

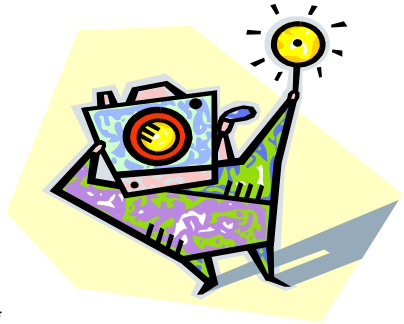


Photo Contest at Region I Meeting

We all know that histotechnology is an art and we histotechnologists create beauty every day with our routine and special stains. Now we're giving you a chance to "show off" your talent at the 2010 Region I meeting in April. We'll be having a photo contest with an exciting prize to be awarded! Send your picture (jpeg) of a histological slide via email to Amos Brooks at:

amosbrooks@gmail.com

or via snail mail send a 4"X 6" snapshot to:

Nancy Troiano, 140 Peters Lane, Rockfall, CT 06481.

Please put your name on the back of the photo so that we may return it to you.

Photos will be displayed during the two days of the conference and attendees will vote for their favorite. Let's show off our beautiful work – and get a prize too!

www.connhisto.org

GENERAL INFORMATION

- Use one registration form for each person. Forms may be photocopied. On-line registration is available on our website at: www.connhisto.org under “Meetings”.
- Name tags will be required for admission to workshops, sessions, & exhibits.
- NSH Contact Hours for CEU’s will be given for all sessions and workshop. NSH will mail earned CEU’s to NSH members within 4 weeks of receipt of completed paperwork. Applications for membership to NSH are located at www.nsh.org
- For registration purposes, member rate is applicable to individuals currently listed as members of a state within Region I or as a member of NSH. Student members pay reduced rates as listed on program registration form.
- A late fee of \$35 will be charged after April 7th. Walk-in registrations will be available with the additional \$35 late fee charge.
- Cancellations before March 25th will receive refund minus a \$35 cancellation fee. No refunds after this deadline.
- Hotel reservations may be made by contacting: The Mystic Hilton at 1-860-572-0731. Special conference rates of \$119/night for single/double rooms, plus tax have been arranged for our meeting. To guarantee these special rates make your reservations by March 25,2010. Refer to hotel block Connecticut Society of Histotechnology Region I Symposium, Group Code when making your reservations.

State President’s Meeting will be on Thursday April 22, 2010, 7:00pm-9:00pm.

Exhibit Hours: Friday April 23, 2009 9:30am—5:00pm and Saturday April 24, 2009 8:30am— 1:30pm.

Registration Hours: Thursday April 22, 2010 5:30pm—7:00pm, Friday April 23, 2010 7:00am—3:00pm Saturday April 24, 2010 7:00am—1:00pm

2010 REGION I CONFERENCE AGENDA

Thursday, April 22, 2010

5:30 p.m. – 7:00 p.m. Registration
7:00 p.m. – 9:00 p.m. State Presidents' Meeting

Friday, April 23, 2010

7:00 a.m. – 3:00 p.m. Registration
7:00 a.m. – 8:30 a.m. Continental breakfast
8:00 a.m. – 11:30 p.m. Educational sessions
9:30 a.m. – 10:00 a.m. Morning break
9:30 a.m. – 5:00 p.m. Vendor exhibits open
11:30 a.m. – 1:00 p.m. Lunch
2:30 p.m. – 3:00 p.m. Afternoon break
1:00 p.m. – 4:30 p.m. Educational sessions

Saturday, April 24, 2010

7:00 a.m. – 1:00 p.m. Registration
7:00 a.m. – 8:30 a.m. Continental breakfast
8:00 a.m. – 11:30 a.m. Educational sessions
9:30 a.m. – 10:00 a.m. Morning break
9:30 a.m. – 1:30 p.m. Vendor exhibits open
11:30 a.m. – 1:00 p.m. Lunch/Raffle/Scholarship awards
1:00 p.m. – 4:30 p.m. Educational sessions
2:30 p.m. – 3:00 p.m. Afternoon break
4:30 p.m. Close of meeting – Enjoy Mystic

FRIDAY MORNING SESSIONS

Workshop #1A (1.5 hours) 8:00 a.m. – 9:30 a.m.

Forensic Archaeology: From Vampires to Adolf Hitler. Nicholas Bellantoni, Ph.D. This workshop will provide background into the goals and methods of forensic archaeology including techniques of field excavation and laboratory analysis of human skeletal remains. The use of archaeology in the search for buried murder victims and case studies from crime scene investigations in Connecticut will be outlined. Two examples of the use of forensic archaeology and skeletal analysis to solve historical questions of New England vampire folk belief and the ultimate disposition of the remains of Adolf Hitler will be presented.

Workshop #1B (1.5 hours) 10:00 a.m. – 11:30 a.m.

Laboratory Safety. Michael Tortora, CHMM, CHSP

Laboratory safety and health programs are not only a requirement, but necessary to create a safe working environment in your laboratory. An effective safety and health program will help you organize and execute a robust safety program while maintaining compliance with all the safety and environmental regulations. As we head into the new decade, environmental or “green” initiatives are now becoming standard practice, not only in the lab environment, but throughout all industries. The inevitable crossover from safety into environmental programs can help your lab become safer and more efficient than ever. This presentation will guide you through setting up and running a successful program as well as going above and beyond to keep your lab safe and environmentally responsible.

Workshop #2A (1.5 hours) 8:00 a.m. – 9:30 a.m.

Histology Field Methods for Beluga Whales. Tracy Romano, Ph.D.

Histotechnology has played a critical role in our understanding of the whale immune system. Proper fixation and processing techniques for light and electron microscopy and immunohistochemistry first had to be worked out in field conditions. The techniques themselves also had to be adapted in the laboratory specifically for whale tissue. Whale tissues collected during subsistence hunts reveal the microanatomy of the whale immune system to be similar to other terrestrial mammals with some differences. Differences are suggestive of evolution and/or adaptation to the aquatic environment. Immunohistochemistry reveals sympathetic nerves in lymphoid organs not only associated with the smooth muscle of vasculature but closely associated with cells of the immune system. Electron microscopy reveals noradrenergic nerve terminals closely associated with lymphocytes. These pathways provide a direct anatomical link between the nervous and immune systems whereby environmental and anthropogenic “stressors” may impact health. Flow cytometry has enabled the study of specific lymphocyte subsets in blood as well as evaluation of immune function and status in live whales. All of these techniques have contributed and continue to contribute to our understanding of whales in the Aquarium setting and the health of whales in the wild.

Workshop #2B (1.5 hours) 10:00 a.m. – 11:30 a.m.

Comparative Histology of Aquatic Species. Salvatore Frasca Jr., DVM, Ph.D.

Aquatic animal species are important to a variety of commercial and research interests. As such, tissues from aquatic animals are submitted to histology labs for a range of purposes. While the work request may seem routine, certain tissues from aquatic species may pose challenges in interpretation of histologic structure, function or preparation of sections without artifact. The objective of this seminar is to compare and contrast microscopic anatomy of several aquatic animal species and provide rationales for the implementation of histologic procedures to improve section quality. Photomicrographs will be shown to represent histologic structures of fish, turtles and octopus.

Workshop #3A (3.0 hours) 8:00 a.m. – 11:30 a.m.

Leadership Jazz- Developing Alignment & Synchronicity in Lab Operations.

Skip Brown, HT (ASCP)

Within the diversity of skills, talents and attitudes in the laboratory, they key to any great leader is their ability to influence workers to orient themselves in a set direction, and follow that leader towards the accomplishment of goals. This workshop will discuss the characteristics and traits of leaders who inspire and motivate workers to achieve higher goals. Using a parallel between various components of a jazz band with the individual members of a workgroup, participants will see how workers have a vital role in the rhythmic flow of productivity. They will also see the parallel between jazz band leader and supervisor in maintaining synchronicity. A key focus of this session will be the leader's ability to examine their personal actions and motives.

FRIDAY AFTERNOON SESSIONS

Workshop #1C (1.5 hours) 1:00 p.m. – 2:30 p.m.

Identifying Artifacts. Zoe Ann Durkin, M.Ed., HT (ASCP)

Microtomy is an art and a skill. Within the field of Histotechnology identification of artifacts is important and in the goal of producing quality slides. As a histologist, you are confronted with problems and difficulties to overcome on a daily basis. Numerous things affect the quality of our tissue sections and it is vital to be able to identify these problems. This workshop will assist you in recognizing artifacts encountered when sectioning difficult tissue and how to remedy them.

Workshop #1D (1.5 hours) 3:00 p.m. – 4:30 p.m.

Digital Pathology Today. Virgil Hernandez

Digital pathology is at the tipping point for gaining a broad acceptance in today's clinical pathology laboratory. This "hands-on" informative session will provide each

participant with a basic understanding of this new technology along with an overview of the clinical benefits available to users of this exciting new tool.

Workshop #2C (1.5 hours) 1:00 p.m – 2:30 p.m.

The Autopsy, Its Historical Importance and Its Continued Relevance (or Why You Should Cut the Stuff in the Blue Cassettes Today).

Harold Sanchez, MD
After centuries of leeches, purgatives and humoral theories, medicine finally began to emerge from the dark ages in the 1400's largely due to a renewed interest in human anatomy. Early anatomic work was often done despite adverse public opinion and under difficult circumstances. Subjects of anatomic dissections were often executed criminals or other marginalized members of society. Just as academic professors began to appreciate the power of normal structure to explain normal function, practicing physicians began to turn to the study of pathologic anatomy (revealed by autopsy) to explain disease. This talk will follow the history of the autopsy (and mention some of its proudest and some of its most embarrassing moments), the advent of pathology and make the case for its continued role in medical education, research and quality control.

Workshop #2D (1.5 hours) 3:00 p.m. – 4:30 p.m.

Specialized Histopathologic Techniques used in Mouse Research Pathology.

Carmen Jane Booth, DVM, Ph.D.

The laboratory mouse plays a key role in the advance of medicine and research in the biomedical sciences throughout the world. At Yale University a large number of investigators need specialized histology and pathologic interpretation of genetically altered mouse tissue. This seminar will cover specific examples of specialized techniques used for harvesting, fixing, trimming (pre and post processing) of mouse embryos and selected tissues (including ear pinnae, limbs, gastrointestinal and reproductive tracts), and paraffin block modifications used prior to tissue sectioning. Relevant scientific articles with data generated using these techniques will be presented.

Workshop #3B (3.0 hours) 1:00 p.m. – 4:30 p.m.

Effectively Dealing with Difficult Behavior.

Linda Horbal, PHR
One of the most uncomfortable situations most of us experience is dealing with individuals who have difficult, even unacceptable, behavior. Whether that person is a customer, patient, colleague or family member, we frequently feel powerless in the face of such an encounter. In reality, we have more ability to creatively deal with behaviors than we realize. Difficult people can be our teachers, since there's a lot to learn about ourselves as well as them in such experiences. Workshop participants will have the opportunity to learn more about the "power of perspectives" and the process of "reframing" events. In addition, participants will be introduced to several practical techniques to apply in the workplace such as gaining emotional distance from the behavior and establishing more of a win-win spirit during an encounter with difficult behavior. No one looks forward to dealing with difficult behavior; although, individuals might consider these encounters in a slightly different light as a result of their participation in this workshops

SATURDAY MORNING SESSIONS

Workshop #1E (1.5 hours) 8:00 a.m. – 9:30 a.m.

Insect Histology: Historical Overview and Current Perspectives. Damien Laudier M.S.

The practice of insect histology presents unique technical challenges and is a relatively esoteric specialty in the overall field of histotechnology. This seminar will present an historical survey of the specialty, review the basic concepts of insect morphology, discuss protocols, and provide an overview of how histotechnology is currently playing a vital role in advancing the understanding of insect morphology and physiology.

Workshop #1F (1.5 hours) 10:00 a.m. – 11:30 a.m.

Hard, Harder and Hardest: Choosing the Right Process for Your Bone Project. Susan Ryan, MS

Processing bone and cartilage has challenged histologists throughout the years. In this workshop methods for decalcified (paraffin and frozen) and undecalcified (methylmethacrylate and Epon) methods for processing bones to best fit the diagnosis and analysis will be discussed. Detailed protocols will be presented pertaining to processing and staining of bone and cartilage samples. Common problems and tricks of the trade will be discussed. We will focus on aiding pathologists and /or investigators with understanding diseases such as rheumatoid arthritis, osteoarthritis, renal osteodystrophy and osteoporosis histologically through optimal processing methods.

Workshop #2E (3.0 hours) 8:00 a.m. – 11:30 a.m.

Let's Be Civil! How Considerate Conduct Impacts the Workplace. Glenda Hood, M.Ed., HT(ASCP).

Have you ever been frustrated because someone didn't return your phone call or respond to your email? Have you heard negative remarks made by a co-worker about another colleague? These actions, and many others that we consider rudeness or poor manners, are in the category of incivility. Many medical schools are incorporating civility courses for their students, as a result of inconsiderate and disruptive actions by students and faculty over the years. This workshop will define civility and incivility, as well as discuss how we can model and encourage considerate conduct in the workplace.

Workshop #3C (3.0 hours) 8:00 a.m. – 11:30 a.m.

The Wax Museum, Understanding Paraffin. Skip Brown, HT (ASCP)

For over a century, scientists and researchers have sought to find appropriate mediums conducive to basic histologic applications; one that will infiltrate various tissues, maintain the relationship of cells and tissue stroma and be compatible with other chemicals used in histotechnology. While paraffin wax has become a standard universal infiltrate for routine histology, paraffin itself has evolved into many types

using polymer and resin additives to enhance performance. This workshop will give a brief history of infiltration mediums and their applications.

SATURDAY AFTERNOON SESSIONS

Workshop #1G (1.5 hours) 1:00 p.m. – 2:30 p.m.

12 Common Safety Mistakes in the Histology Lab and How to Avoid Them.

Jason Burrill, HT (ASCP)SLS, NRCC-CHO

Have you ever had to perform a procedure quickly like staining or grossing in the lab and looked around to see if anyone was watching you so you wouldn't have to put on a lab coat, safety glasses or gloves? While working in the histology lab can be chaotic at times, it is imperative that personnel perform their work duties safely to avoid accidents that may cause harm to themselves or their fellow workers. This presentation will review 12 common safety mistakes and how to reduce the likelihood that they will occur. Time will be provided at the end of this workshop for question and answer session and to allow attendees to share their own experiences.

Workshop #1H (1.5 hours) 3:00 p.m. – 4:30 p.m.

Waste Management for the Histology Lab. James H. Taylor

All histology labs use organic solvents such as xylene, xylene substitutes, alcohols and formalin. Some of these solvents are expensive to purchase and fluctuate with the price of energy. Costs for disposal of these solvents have become more expensive than purchasing costs. This seminar will provide instruction on how to identify and collect solvents for recycling from the processor and stain lines. Attendees will learn what solvents can be recycled and QC procedures for the laboratory. Fundamentals for starting a solvent recycling program in a pathology laboratory will be presented and attendees will be able to make informed decisions when purchasing recyclers.

Workshop #2F 1:00-2:30

Advanced Technology and Improved Patient Safety Practices in the Clinical Surgical Pathology Laboratory. Andrea Viray, M.S., SCT, MP(ASCP)

Yale University has integrated instrumentation with advanced technology and practices in the surgical pathology and histology laboratory. Complete bar coding is carried through the gross room into tissue processor batch building and cassette reconciliation. Microwave processing and automated staining are coupled with bar code utilization. This powerful equipment gains financial support once tremendous patient safety benefits are realized for hospital administration. These practices are integral to JCAHO and CAP requirements for improving patient safety in all aspects of specimen handling. Discussions will focus on process improvement, lean concepts, digital whole slide scanning. Benefits and obstacles will be detailed for discussion concepts.

Workshop #2G (1.5 hours) 3:00 p.m. – 4:30 p.m.

Connective Tissue Stains. Zoe Ann Durkin, M.Ed., HT(ASCP)

This seminar will provide participants with information about various staining methods for reticulum fibers, basement membrane, collagen, muscle and elastic fibers. Topics to be discussed include: the location of the connective tissue components, the diagnostic application of the staining methods, staining mechanisms of actions, results of special stains, abbreviations and terminology relevant to connective tissue and the staining methods.

Workshop #3D (3.0 hours) 1:00 p.m – 4:30 p.m.

Immunohistochemistry 2010 - Update, Richard Cartun, M.S., Ph.D.

This workshop will consist of two sessions. The first session will cover standardization in immunohistochemical (IHC) testing. Areas to be covered include: “best practices” for tissue fixation and processing, “personalized” antigen retrieval, primary antibody optimization and validation, and the use of positive and negative controls. The second session will explore new applications of IHC testing in diagnostic pathology including the identification of specific cytokeratin proteins, applications to cytology specimens, detection of mismatch repair loss in microsatellite instability testing, IgG4 staining in autoimmune pancreatitis, and detection of infectious disease agents.

REGION I EDUCATIONAL SCHOLARSHIP AWARDS 2010 Region 1 Meeting

Region I is proud to accept applications for the annual educational scholarship fund. There will be TWO scholarships, up to \$500 each, awarded for this meeting. A worthy candidate must meet the following criteria:

- Financial Need
- Membership in any Region I State Society **or** NSH
- Involvement in State and Regional activities promoting histotechnology
- Demonstrate motivation and reason for wanting to attend a Region I Meeting

The candidate must write a letter to the Region I President detailing how he/she meets the above criteria. Also, he/she must submit a similar letter from his/her supervisor or a peer. Selection will be determined by the Region I Histotechnologists, Inc. President, Mary Georger and her committee, consisting of two Region I State Society Officers.

- The scholarship recipient will receive up to \$500 towards expenses of travel, accommodations, and registration to attend the 2010 Region I Histotechnology Conference. The scholarship does not cover food expenses.
- Scholarships will be awarded to TWO deserving recipients for this meeting and are given on a reimbursement basis. Expense receipts must be submitted to the Region I Histotechnologists, Inc. President within 30 days of the meeting.

For more information contact the Region I President:

Mary Georger
57 Ivory Way
Henrietta, NY 14467
Cell: 585-259-6248

Email: mgeorger@gmail.com

Application Timetable:

- Scholarship application deadline: March 15, 2010
- Notification of scholarship recipients: April 1, 2010

REGISTRATION FORM

Name: _____

Address _____

City _____ ST _____ Zip Code _____

Work # () _____ Home# () _____

Employer _____ E Mail _____

Circle Affiliation: CSH NSH RISH MaSH NYSHS MeSH VT/NH Student
Registration Fees

Registration includes: Continental Breakfast, Lunch and Coffee breaks
 Friday and Saturday: Member \$150.00 \$ _____

Non Member \$175.00 \$ _____

Student \$ 75.00 \$ _____

Friday ONLY: Member \$ 80.00 \$ _____

Non Member \$ 95.00 \$ _____

Student \$ 40.00 \$ _____

Saturday ONLY: Member \$ 80.00 \$ _____

Student \$ 40.00 \$ _____

WORK SHOP FEES Please circle Workshop Choices

1.5 HOUR = \$25.00 3.0 hour = \$40.00

Friday A.M			Friday P.M.			Sat A.M		Sat. P.M			
1A	8-9:30	\$25.00	1C	1-2:30	\$25.00	1E	8-9:30	\$25.00	1G	1-2:30	\$25.00
2A	8-9:30	\$25.00	2C	1-2:30	\$25.00	1F	10-11:30	\$25.00	2F	1-2:30	\$25.00
1B	10-11:30	\$25.00	1D	3-4:30	\$25.00	2E	8-11:30	\$40.00	1H	3-4:30	\$25.00
2B	10-11:30	\$25.00	2D	3-4:30	\$25.00				2G	3-4:30	\$25.00
3A	8-11:30	\$40.00	3B	1-4:30	\$40.00	3C	8-11:30	\$40.00	3D	1-4:30	\$40.00

REGISTRATION FEE TOTAL: \$ _____

WORKSHOP FEE TOTAL: \$ _____

GRAND TOTAL: \$ _____

CANCELLATION DEADLINE: BEFORE APRIL 15TH 2010 TO RECEIVE REFUND MINUS \$35.00 CANCELLATION FEE.

MAKE CHECKS PAYABLE TO: CSH

ALL CHECKS MUST BE RECEIVED BY APRIL 7TH 2010- LATE FEE \$35.00

Mail checks to: **Cindy DeRiso**
7 Rolling Meadow Drive
Wallingford, CT 06492

email: catesta@snet.net
Phone: 203-741-1186

MYSTIC HILTON HOTEL
20 COOGAN BLVD.
MYSTIC, CONNECTICUT 06355

Room reservations must be made by March 25, 2010. Please visit the website as soon as possible to reserve your room. Room rates are \$119.00 per night and can be made at this website:

<https://sites.google.com/site/histologyregion1/home/hotel-reservations>

or call the hotel at: 860-572-0731 and mention Region I histology Group.



In the heart of Mystic, Connecticut, just one block from Interstate-95, the **Hilton Mystic** hotel just completed an 8 million dollar renovation in 2008. Conveniently located for both corporate and leisure visitors alike. You'll appreciate our Mystic, Connecticut hotel's convenient location as a coastal stopping point between **New York City** and **Boston**, filled with Historic charm of maritime New England. Across the street from the **Olde Mystic Village** and **Mystic Aquarium and Institute for Exploration**, our Mystic Aquarium hotel is within walking distance of other popular local attractions, such as the **Mystic Seaport Museum**.

2010 REGION I CONFERENCE EXHIBITORS

Many thanks to the following vendor sponsors whose support helps bring the high quality educational programs and state of the art histology product information to our Region I Conference & Symposium this year. Please stop by their display booths and check out their products!



Leica

MICROSYSTEMS

Large Enough To Be Reliable. Small Enough To Be Responsive.

NEWCOMEN SUPPLY®
Your Histology Supplier



POLY SCIENTIFIC

Thermo
SCIENTIFIC

Surgipath



B/R INSTRUMENT CORPORATION

Laboratory Distillation Equipment

ScyTek
Laboratories

Electron
Microscopy
Sciences